

GREd[®]

En-routing Geospatial Excellence



FOUNDER'S MESSAGE



MADDU KUNAL RAO

Founder,
Chief Executive Officer

“Our Foundation addresses the geospatial industry’s need for a trained workforce in India and with the liberalized guidelines for acquiring geospatial data, we are poised to nurture spatial thinking and work in collaboration with the current industry standards.”

– *Maddu Kunal Rao,*
Founder
GREd Foundation.



Geospatial World Recognition to our Founder and CEO in the contribution of GIS



OUR PORTFOILO



GREd offers a complete range of GIS services including

- Base map creation,
- DGPS survey,
- Field survey,
- Drone survey.

We use both GIS and Surveying to deliver highly accurate information.





GEOSPATIAL RESEARCH AND EDUCATION FOUNDATION



ISO 9001 : 2015 CERTIFIED



ACCREDITED CERTIFICATION



M MINISTRY OF
C CORPORATE
A AFFAIRS
GOVERNMENT OF INDIA

MINISTRY OF CORPORATE AFFAIRS



INDIAN INSTITUTE OF REMOTE SENSING
Indian Space Research Organisation
Department of Space, Govt. of India

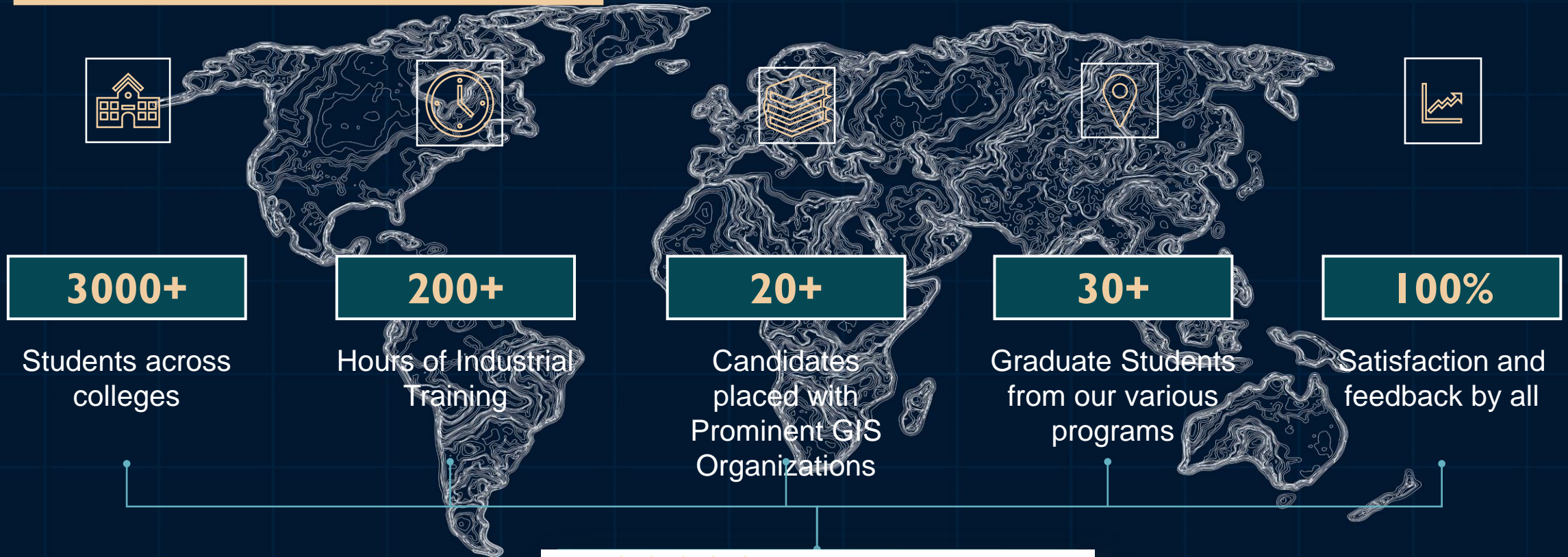


#startupindia

IIRS E- LEARNING NODAL CENTRE



OUR REACH SINCE INCEPTION



4.9 ★★★★★ 78 Google reviews
Mapping service in Guwahati, Assam



DRONE SURVEY

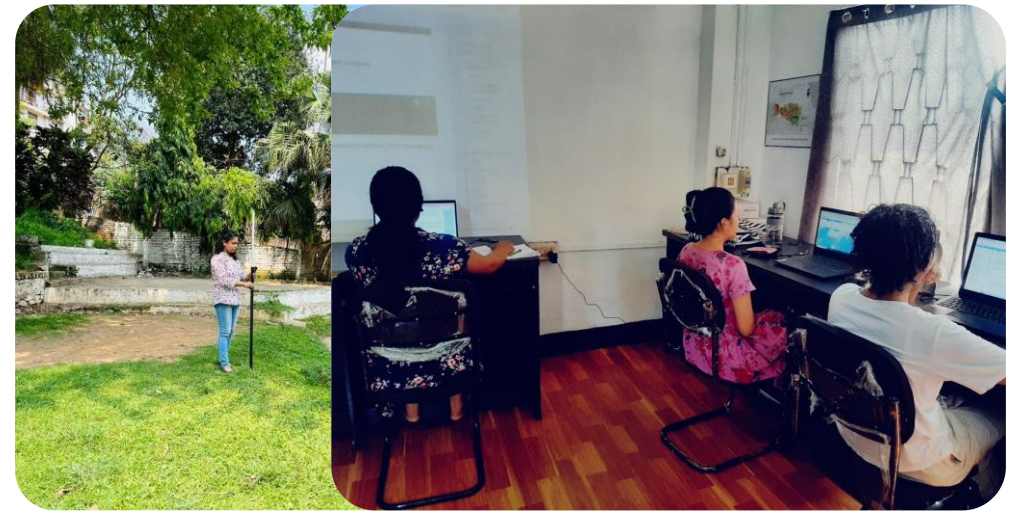
➤ *We have successfully conducted UAV Survey, drone surveys which are a relatively new technology that is quickly gaining popularity in the GIS industry for making quick and prompt informative decisions*



Drone Capture to DGPS Survey

GEO-TAGGING

➤ *Having a team of experienced professionals who are experts in geo-tagging data. We use the latest technology to ensure that our geo-tagging services are of the highest quality. We have a proven track record of success in geo-tagging a wide variety of data sets.*

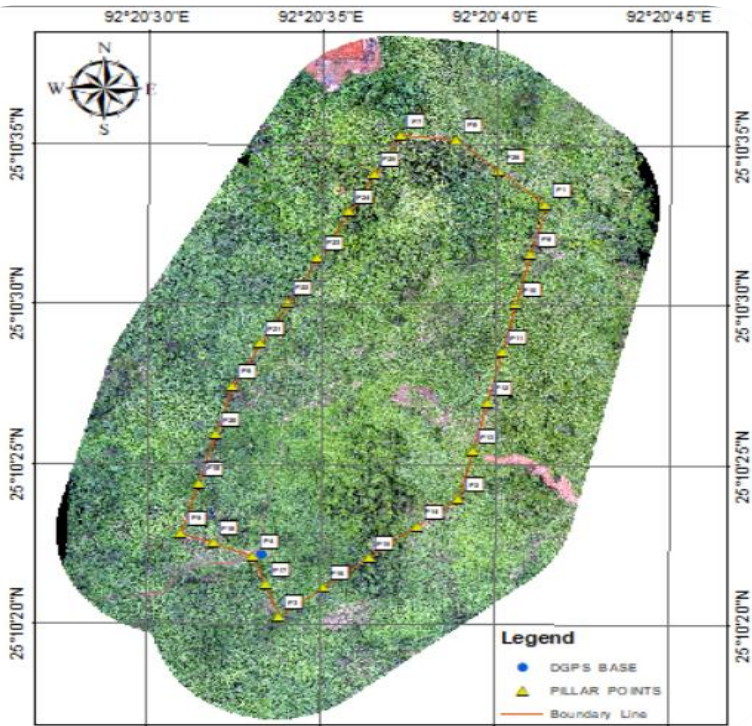


Ground Data Collection to System Analysis



DIGITIZATION

- We undertake Digitization projects for clients look to digitize their old paper maps. We use our expertise and our state-of-the-art technology to digitize the maps, to produce high-quality digital copies that were easy to read and use

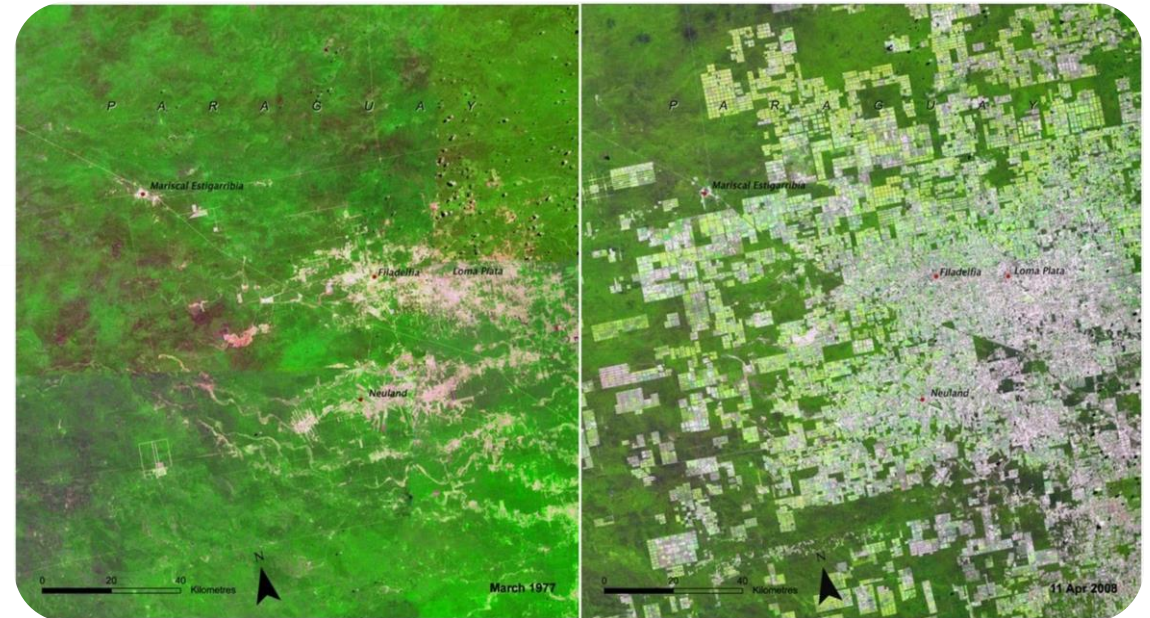


Ground data to Final Map



IMAGE INTERPRETATION

- GIS can be used to automate image interpretation, which can save time and money. Image interpretation can be used for a variety of applications, such as: Natural resource management: GIS can be used to interpret satellite imagery to track changes in vegetation, water resources, and wildlife.



Satellite imagery to Information



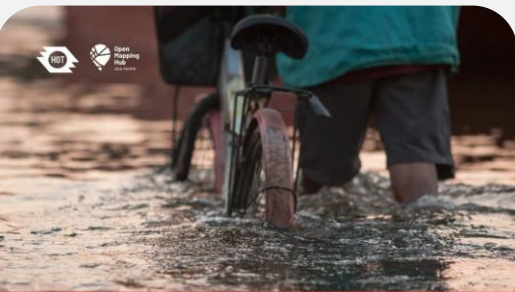
● OPEN STREET MAPPING

HELP US MAP TO SUPPORT THE FLOOD RESPONSE IN ASSAM, INDIA!

We're mapping building footprints in 18 districts of Assam to aid Flood Mitigation efforts.

➤ *We believe that OpenStreetMaps is a powerful tool that can be used to help mitigate disaster. We are committed and confident to continuing our work with OpenStreetMaps, to make a positive difference in the lives of people in the region."*

	27m 57s Average mapping time per Task
	16m 15s Average validation time per Task
	776 Changesets
	19,001 Total map edits
	18,376 Buildings mapped



HELP US MAP ROADS IN FLOOD AFFECTED HARYANA!

Your contribution can help relief organizations swiftly navigate and deliver aid to the most affected areas in Haryana.

In partnership with:



#INDIAFLOODS2023

DISASTER MAPATHON

START MAPPING

29 JULY 2023
 4PM-6PM (IST)
 ONLINE

HELP US DIGITIZE ROADS & BUILDINGS IN FLOOD AFFECTED INDIA!



ENTRUSTED TO DELIVER THE BEST

Government and Private Organizations



GOVERNMENT OF ASSAM
IRRIGATION

Ministry of Environment, Forest and Climate Change
Government of India



Har Ghar Jal
Jal Jeevan Mission

Jal Jeevan Mission

Department of Drinking Water & Sanitation
Ministry of Jalshakti

DRONES
TECHLAB

EMC



ROYAL GLOBAL UNIVERSITY
GUWAHATI

AMRITCEM
Cementing Performance



Indian Bureau of Mines



WE PROVIDE



Internships and Research



Proprietary Training



Open-Source Training



- Internship Candidates from Royal Global University at GRED

Specialization

- ❖ Data Visualization
- ❖ Data Analysis
- ❖ Digital Image Processing
- ❖ Real time monitoring
- ❖ Web Mapping
- ❖ Indoor Mapping
- ❖ Open Street Maps Training
- ❖ Network Analysis (Navigation-related)
- ❖ Working with Sentinel Hub
- ❖ Hydrology
- ❖ Disaster management
- ❖ Programming GIS





OUR PLACEMENTS

Government and Private Organizations

Himashree Kalita
Assam Survey & Settlement Training Centre, Govt.of Assam

Carefully Lyngdoh Marshilong
CLLMP, Basin Department
Govt of Meghalaya

Nepolean Boruah
Drone Tech Lab,
Kolkata, West Bengal

Kamala Chetry
Jr. GIS Engineer,
RMSI, Noida

Ashankhya Golhani
Design boxed,
Uttar Pradesh

Mukti javali
Palni India Pvt.Ltd,
Hyderabad, Telangana

Rajashree Boruah
Dept.of Panchayat raj and Rural Development, Govt.of Assam

Anup Kr.Bhattacharjee
Field Officer,
DDMA, Govt.of Assam

Rupa Kemprai
GIS Executive
RCHobbytech Solutions Pvt Ltd

Amitabh Gogoi
Jr. Assistant, Social Welfare
Dept.of Women & Child development
Govt.of Assam

Purna Jyoti Moran
RCHobbytech,
Guwahati, Assam

Sunayana Goswami
PNRD,
Govt of Assam

Renuka Topno
Bharat Rural Livelihoods Foundation, Jharkhand

OUR COLLABORATIONS



UNL GLOBAL

UNL is a smart micro-location infrastructure and new-generation mapping technology startup building the Internet of Places - a digital 1:1 geodata twin of the physical world.



HOT OSM (OPEN STREET MAPPING)

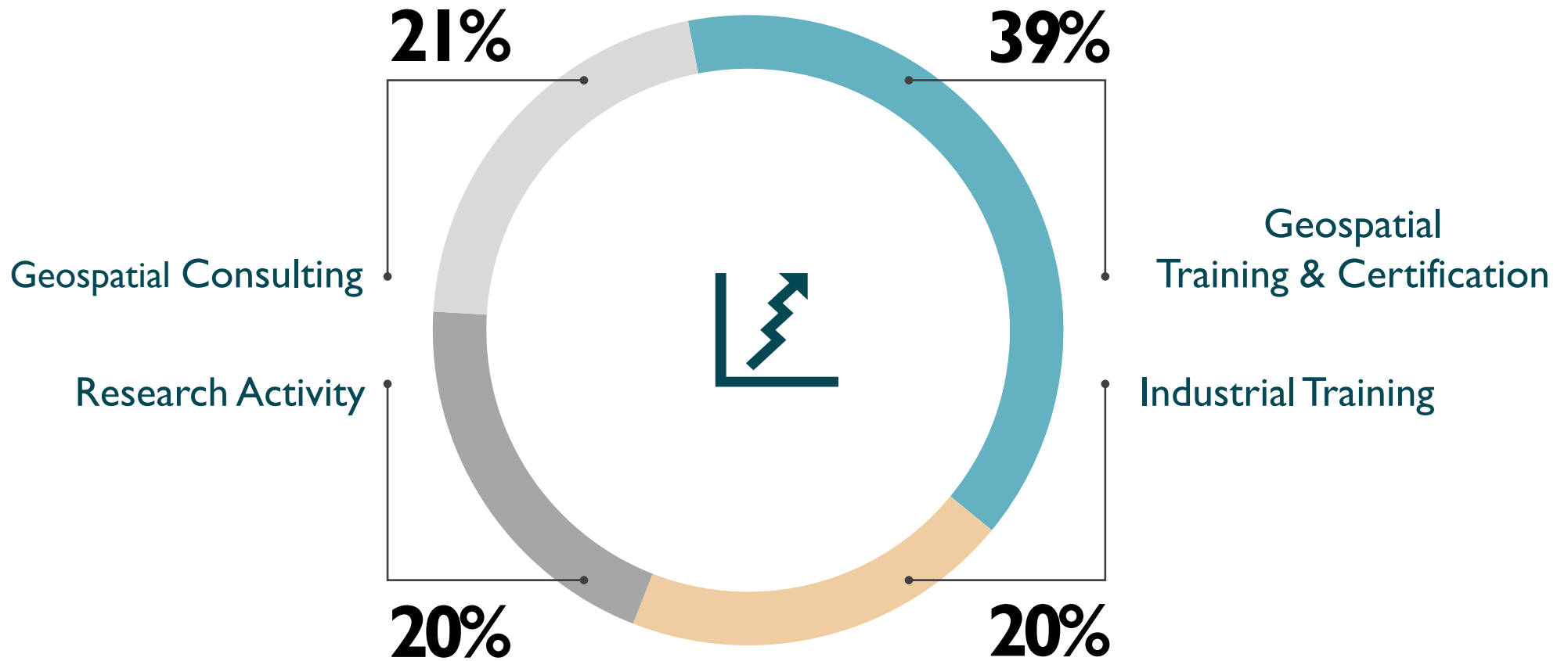
HOT is an international team dedicated to humanitarian action and community development through open mapping.. HOT is an international team dedicated to humanitarian action and community development through open mapping.



GEOPLAN SOLUTIONS PVT.LTD

Geoplan Solution Private Limited (GSPL) is an emerging Geographic Information System (GIS), Remote Sensing (RS), Utility Mapping, Investigation & Consultancy, Engineering Surveying Company to provide cost effective and efficient solutions to the customers/clients across Northeastern States and India as a whole.

OUR CORE AREAS



THANK YOU



[GRED Foundation](#)

+91-7086709611

+91-9505571444



[3rd Floor, Mitra Commercial Building, Ashram Rd,
Ulubari, Guwahati, Assam 781007](#)